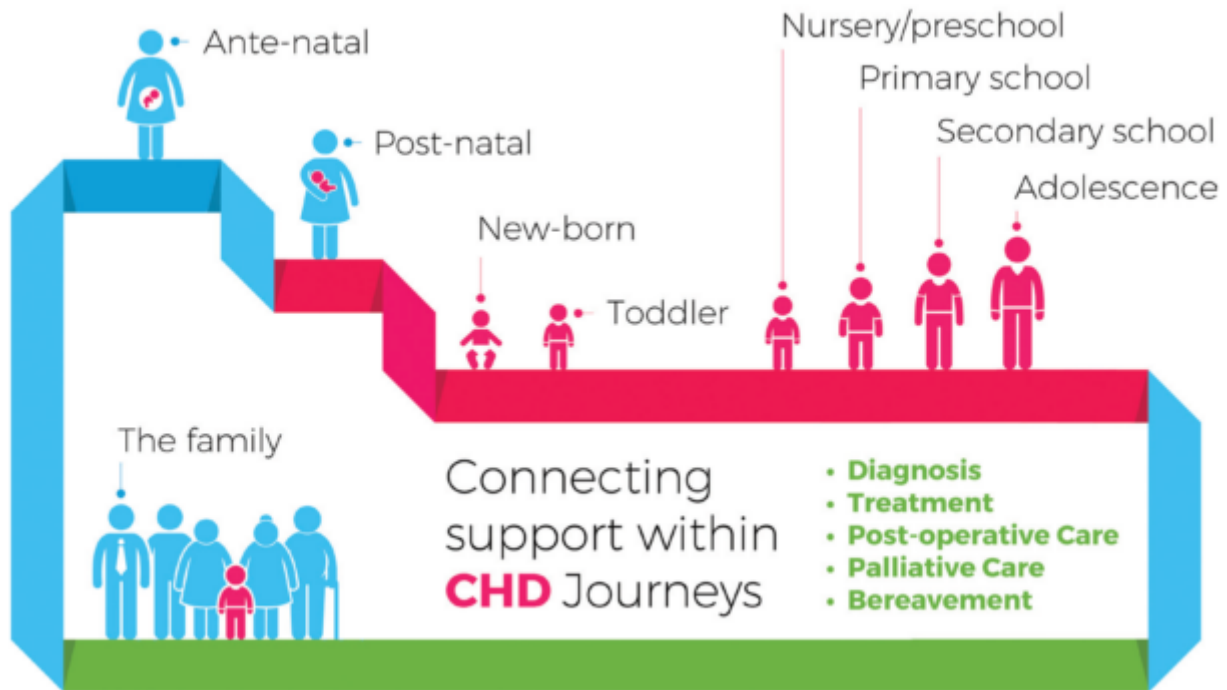


Who we support & why



Connecting the children's heart community

We provide support to:

- **Children and young people** with heart conditions from birth to adulthood who have been treated by Evelina London, Royal Brompton and Harefield and their networks of specialist local hospitals.
- **Parents & Carers whose children are** diagnosed with a heart condition either prenatally or during childhood, throughout their child's life and at times when they need us most
- **Siblings** affected by heart conditions
- **Wider family** affected by children's heart conditions
- **Professionals** supporting families as part of Evelina London, Royal Brompton and Harefield and their networks of specialist local hospitals.

We receive no government or NHS funding and rely solely on public generosity to ensure that we continue to support and empower children, young people and families affected by heart conditions.